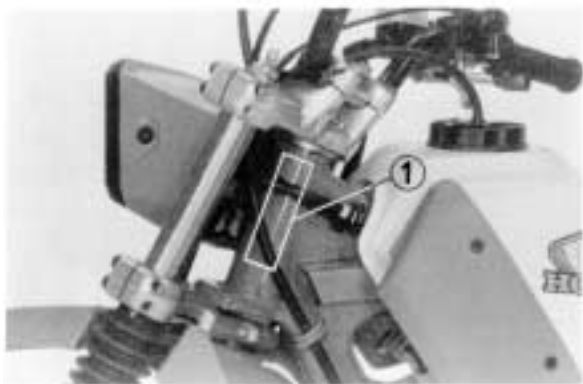


## SERIAL NUMBERS

The frame and engine serial numbers are required by your dealer when ordering replacement parts. Record the numbers here for your reference.

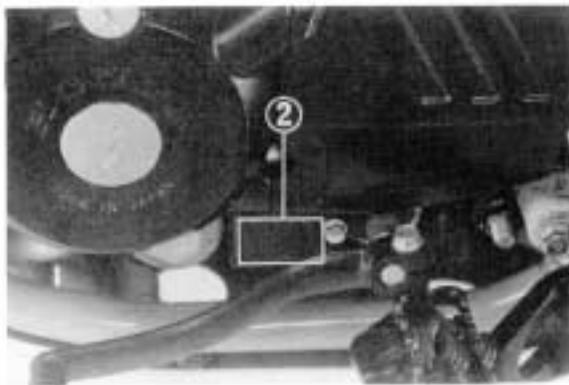
FRAME NO. \_\_\_\_\_



(1) Frame serial number

The frame serial number (1) is stamped on the left side of the steering head. The engine serial number (2) is stamped on the crankcase just above the left foot peg.

ENGINE NO. \_\_\_\_\_



(2) Engine serial number