



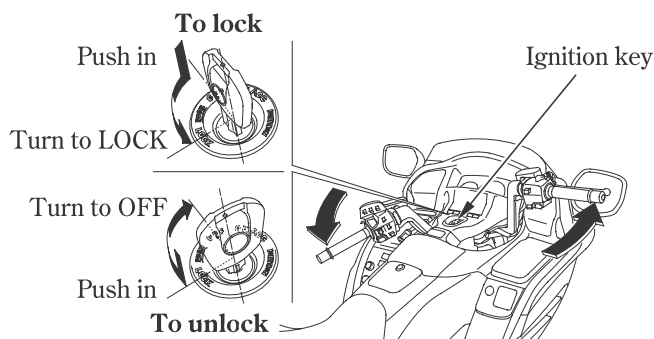
FEATURES (Not required for operation)

STEERING LOCK

To lock the steering, turn the handlebars all the way to the left or right, turn the key to LOCK while pushing in. Remove the key.

To unlock the steering, turn the key to OFF while pushing in.

Do not turn the key to LOCK while riding the motorcycle; loss of vehicle control will result.



HELMET HOLDER

Insert the ignition key and turn it counterclockwise to unlock the helmet holder.

Hang the helmet on the holder pin by the helmet D-ring and push in on the holder pin to lock it.

Remove the ignition key.

To install two helmets on the helmet holder, use the helmet set wire provided.

Route either end of the helmet set wire through the D-ring of both helmets and hang the hoops of the wire on the holder pin and lock as above.

The helmet set wire provided with each machine is located in the left saddlebag when not in use.

The helmet holder is designed for helmet security while parked. Do not ride with a helmet attached to the holder.

NOTICE

Riding with a helmet attached to the helmet holder can cause damage to the helmet, or damage to the paint or finish of your motorcycle.

