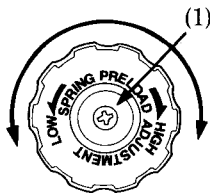


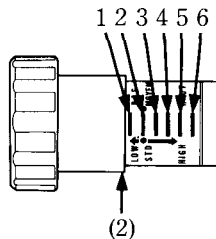
Spring Preload

The spring preload has six spring preload positions for various loads. To make adjustments, turn the adjuster knob (1) clockwise to increase and counterclockwise to decrease preload. Align the lip of the adjuster (2) to any of the six segments according to the following recommended adjustments for various loads.

| Vehicle load | Damping Force | Preload |
|--|---------------|---------|
| Rider alone (up to 75 kg) | 1 | 1 to 3 |
| Rider + Cargo (up to 100 kg) | 2 | 4 |
| Rider + Passenger (up to 150 kg) | 2 | 4 to 5 |
| Rider + Passenger + Cargo (up to Max. Weight Capacity) | 3 | 6 |



(1) Adjuster knob



(2) Adjuster lip