

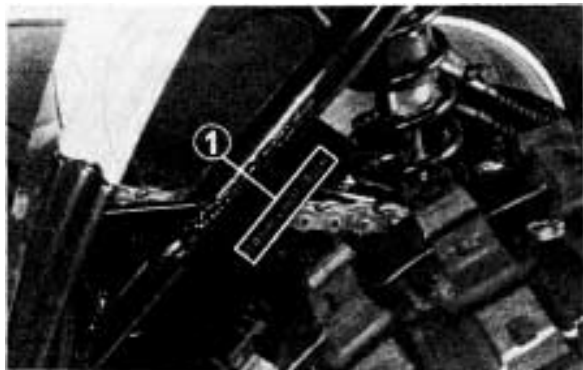
SERIAL NUMBERS

The frame and engine serial numbers are required by your dealer when ordering replacement parts. Record the numbers here for your reference.

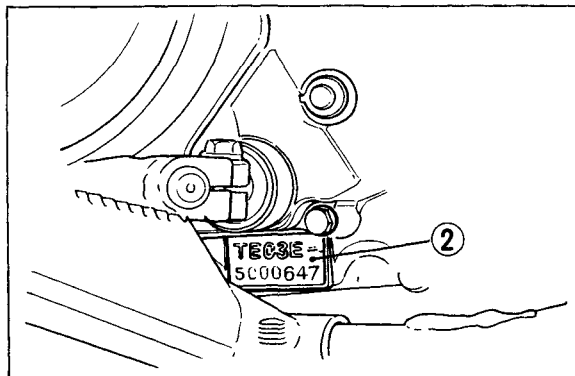
FRAME NO. _____

The frame serial number (1) is stamped on the left side of the frame. The engine serial number (2) is stamped on the crankcase behind the left footpeg.

ENGINE NO. _____



(1) Frame serial number



(2) Engine serial number