

Speedometer [Australia model only]

(Ref. No.) Description	Function
(1) Speedometer	Shows riding speed.
(2) Tripmeter	Shows mileage per trip.
(3) Odometer	Shows accumulated mileage.
(4) Tripmeter reset knob	Resets tripmeter to zero (0). Turn knob in direction shown.

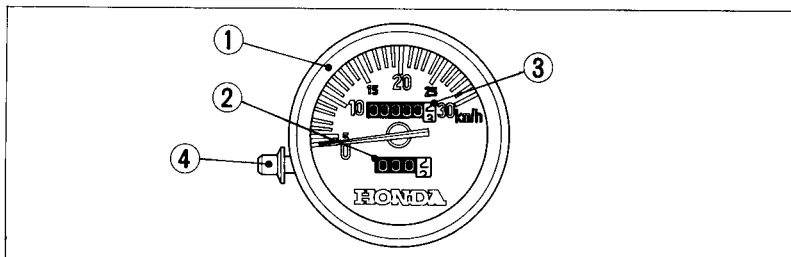


Fig. 2-14 (1) Speedometer (3) Odometer
(2) Tripmeter (4) Tripmeter reset knob

Speedometer hose

The speedometer hose (Fig. 2-15) is below the speedometer (2). When the speedometer glass is clouded, remove the hose by releasing the clip (3). Reinstall the hose and clip after the speedometer glass becomes cleared.

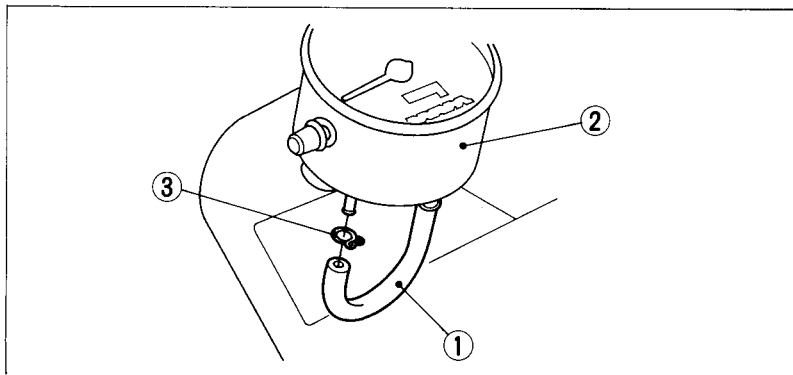


Fig. 2-15 (1) Speedometer hose (3) Clip
(2) Speedometer