

# Vehicle Identification

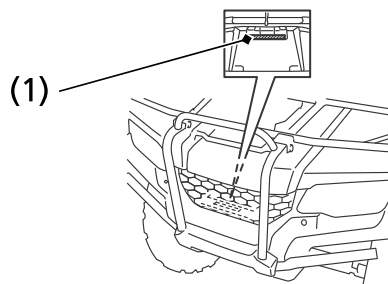
## Serial Numbers

The VIN, engine serial number, and key number may be required when ordering replacement parts. Record the numbers here for your reference.

The VIN (1) is stamped on the front of the frame.

VIN \_\_\_\_\_

FRONT

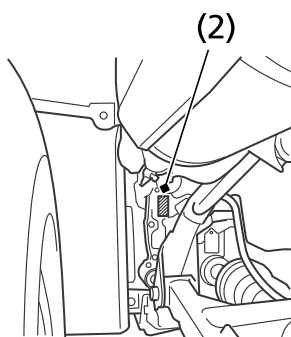


(1) VIN

The engine number (2) is stamped on the upper side of the rear crankcase.

ENGINE No. \_\_\_\_\_

LEFT REAR



(2) engine number

238 Technical Information