

Vehicle Identification

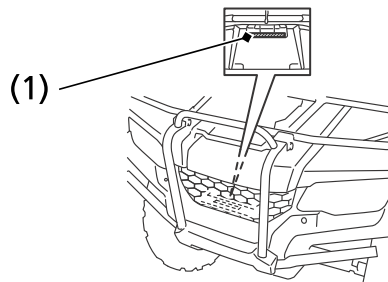
Serial Numbers

The VIN, engine serial number, and key number may be required when ordering replacement parts. Record the numbers here for your reference.

The VIN (1) is stamped on the front of the frame.

VIN _____

FRONT

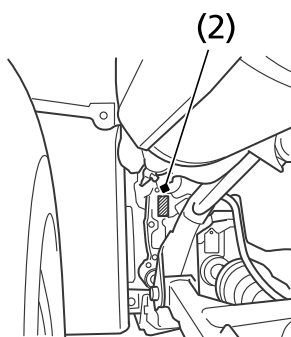


(1) VIN

The engine number (2) is stamped on the upper side of the rear crankcase.

ENGINE No. _____

LEFT REAR



(2) engine number

234 Technical Information