

### TIRE REPAIR (WITH COLD PATCH)

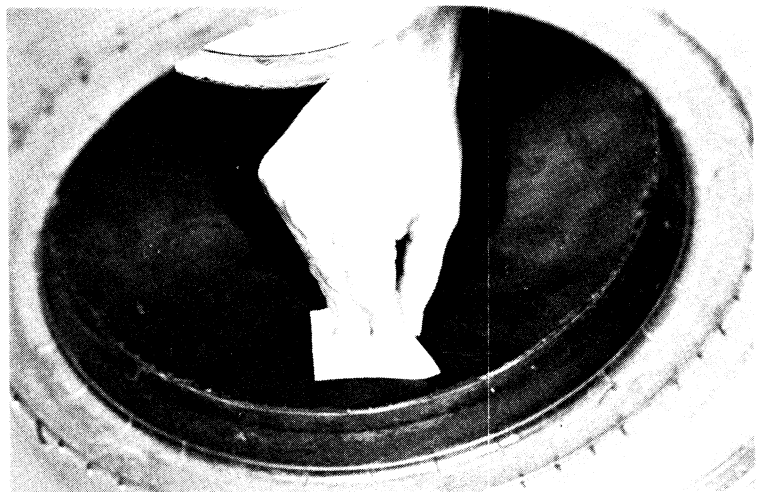
Check the tire tread for puncturing objects.  
 Chalk mark the punctured area and remove the puncturing object.



Clean and roughen the punctured area with a tire rubber cleaner or a wire brush. Clean the area with non-flammable solvent.

#### NOTE

Use a solvent that will not leave an oily residue.  
 Do not use gasoline.



Apply rubber cement around the torn area and allow it to dry. Remove the lining from the patch and center it over the puncture. Press the patch against the puncture using a special roller.

#### NOTE

- Allow the cement to dry until tacky before applying a patch.
- Do not touch the cement surface with dirty or greasy hands.

