

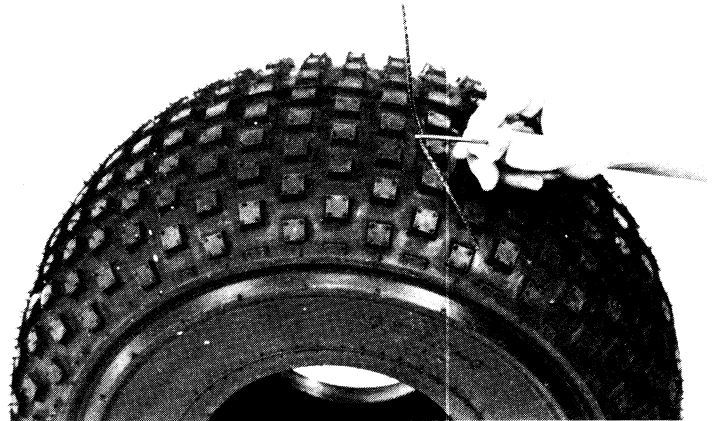


TIRE REPAIR (EXTERNAL WITH RUBBER PLUG)

NOTE

This method is an emergency repair only. Replace the plug at the first opportunity with a cold patch.

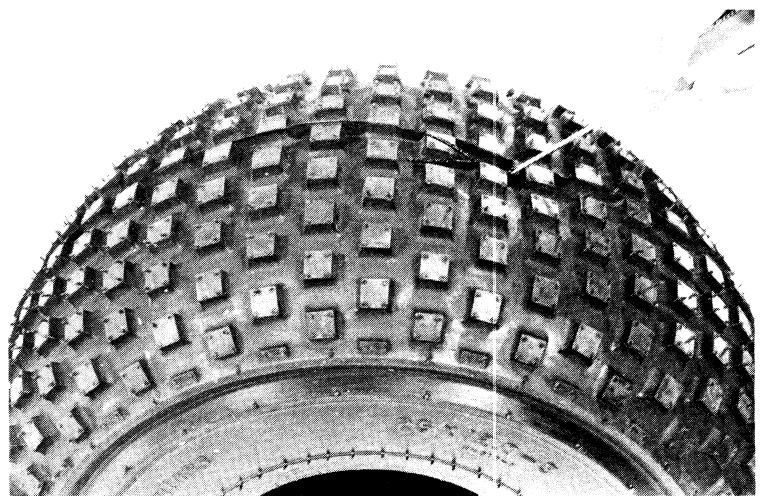
Remove the puncturing object.
Insert a rubber plug through the eye of an inserting needle.
Apply patching cement to the plug.



Center the needle on the plug and insert until the plug is all the way in the tire.
Twist the needle several times.

Pull the needle straight out so that the plug is about 10 mm (3/8 in) above the tread surface. Trim the plug 2 mm (1/16 in) above the surface.

Repeat the above procedure if the puncture is large.



TIRE ASSEMBLY

Clean the rim bead seat and flanges.
Apply clean water to the rim flanges, bead seat and base.

