

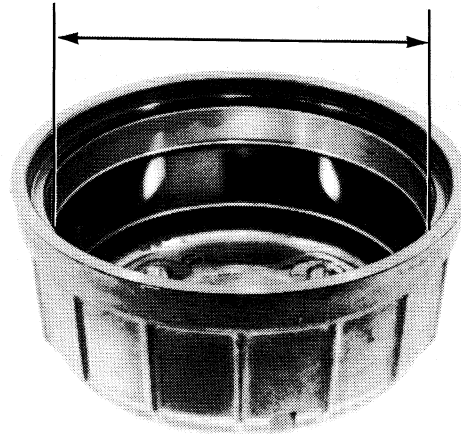
REAR WHEEL/BRAKE/SUSPENSION/FINAL DRIVE

BRAKE DRUM INSPECTION

Measure the I.D. of the brake drum.

SERVICE LIMIT: 161 mm (6.34 in)

Inspect the brake drum for scoring, cracks and concentricity.



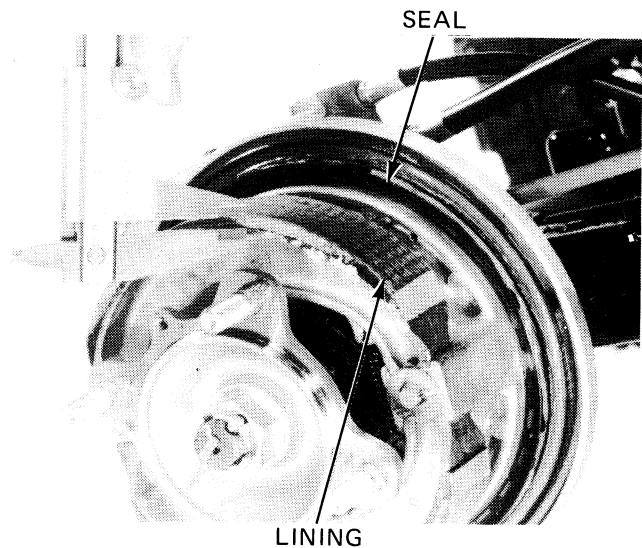
BRAKE LINING INSPECTION

Measure the brake lining thickness.

SERVICE LIMIT: 2 mm (0.01 in)

BRAKE DRUM SEAL INSPECTION

Check the brake drum seal for wear or damage and replace if and the seal ring on the brake drum as a set, if necessary (Page 12-5).



REAR BRAKE DISASSEMBLY

'85;
Remove the cotter pin, axle nut and right wheel hub.
Remove the brake shoes and springs.

