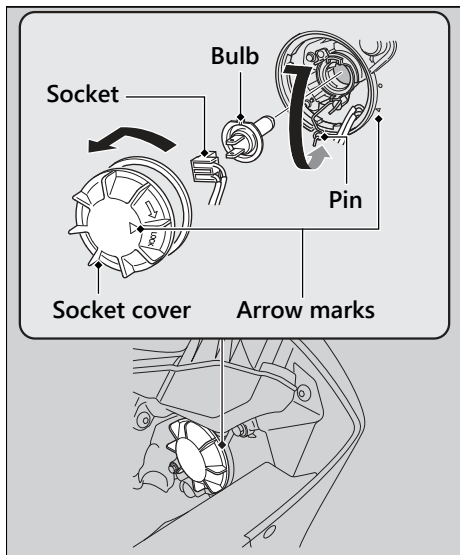


## Headlight Bulb



1. Remove the socket cover by turning it counterclockwise.
2. Pull the socket off the bulb without turning it.
3. Press the pin down and pull out the bulb without turning it.
4. Install a new bulb and reinstall the parts in the reverse order of removal.
  - Make sure the arrow marks on the socket cover and headlight housing are aligned.

Do not touch the glass surface with your fingers. If you touch the bulb with your bare hands, clean it with a cloth moistened with isopropyl (rubbing) alcohol.