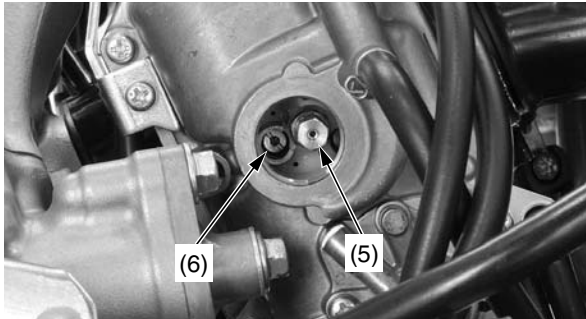


Carburetor Adjustments & Tuning Tips

- Change the main jet (5) and slow jet (6) as required.
Main jet:
1.1 lbf·ft (1.5 N·m, 0.2 kgf·m)
Slow jet:
1.1 lbf·ft (1.5 N·m, 0.2 kgf·m)

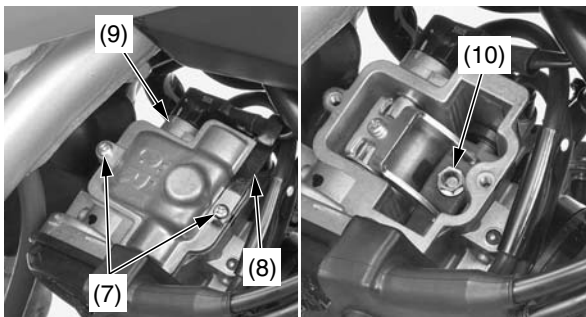


(5) main jet (6) slow jet

- Reinstall the float bowl plug and tighten it to the specified torque:
3.6 lbf·ft (4.9 N·m, 0.5 kgf·m)

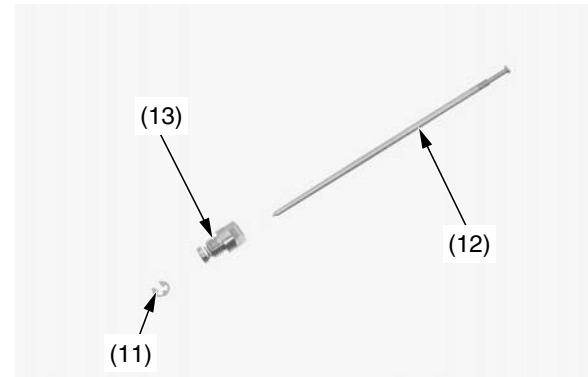
If you've determine that the jet needle or clip position of jet needle must be changed, you must remove the carburetor top.

- Rotate the carburetor to the right and remove the carburetor top screws (7), cable clamp (8) and carburetor top (9).
- Remove the jet needle/holder assembly (10).



(7) carburetor top screws
(8) cable clamp
(9) carburetor top
(10) jet needle/holder assembly

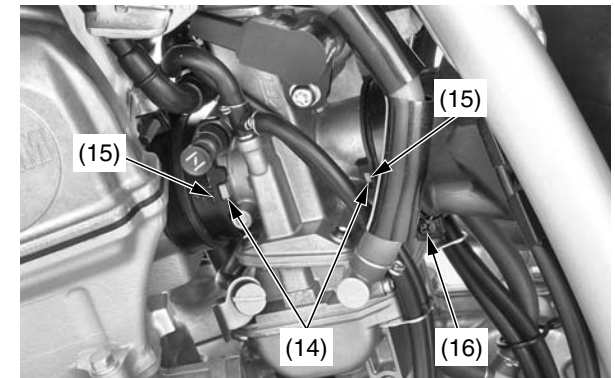
- Remove the clip (11) and jet needle (12) from the jet needle holder (13).



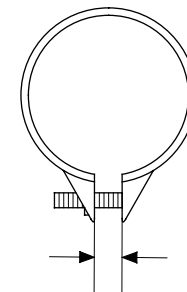
(11) clip
(12) jet needle
(13) jet needle holder

- Change the clip position of jet needle or jet needle as required.
- Reinstall the jet needle/holder assembly and tighten it to the specified torque:
1.5 lbf·ft (2.1 N·m, 0.2 kgf·m)
- Reinstall the carburetor top, cable clamp and carburetor top screws. Tighten the carburetor top screws to the specified torque:
1.5 lbf·ft (2.1 N·m, 0.2 kgf·m)

- Rotate the carburetor and align the tabs (14) on the carburetor with the grooves (15) on the insulator and connecting tube.
- Tighten the connecting tube clamp screw (16) so the gap between the tabs of the clamp is 0.1 ± 0.04 in (3 ± 1 mm).



(14) tabs
(15) grooves
(16) connecting tube clamp screw



0.1 ± 0.04 in (3 ± 1 mm)

(cont'd)