

Fuel System (CRF450R/RWE)

Fuel Pump Filter Replacement

Empty the fuel tank by transferring fuel into an approved gasoline container using a commercially available hand siphon or an equivalent method. Be careful not to damage the fuel pump while draining the fuel in the fuel tank.

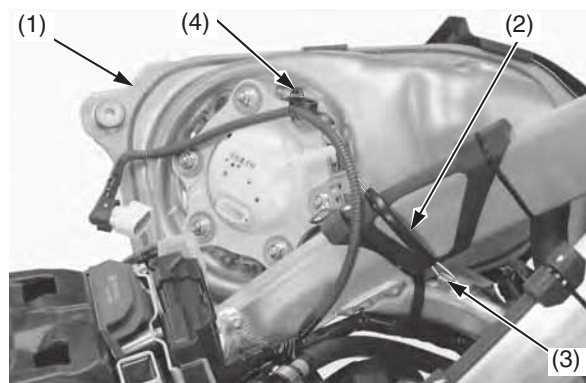
⚠ WARNING

Gasoline is highly flammable and explosive. You can be burned or seriously injured when handling fuel.

- Stop the engine and keep heat, sparks and flame away.
- Handle fuel only outdoors.
- Wipe up spills immediately.

Removal

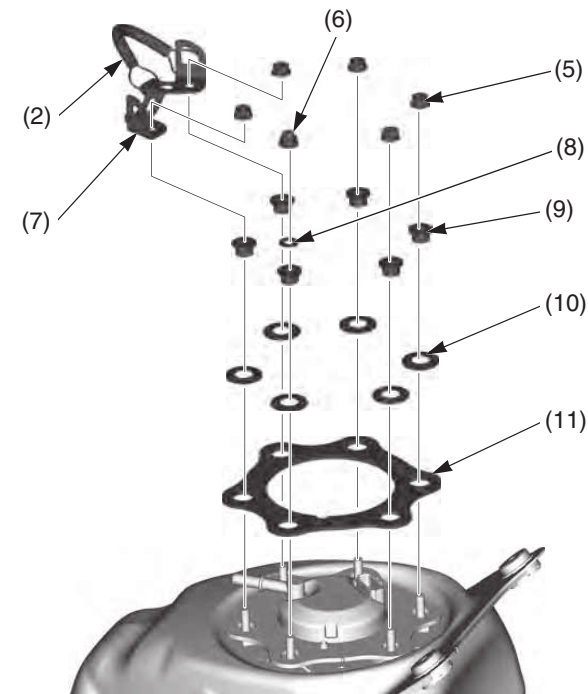
1. Relieve the fuel pressure (page 53).
2. Disconnect the fuel line from the fuel pump (page 53).
3. Remove the fuel tank (1) by releasing the stopper cable (2) from the hook (3) of the frame.
4. Pull the harness band clip (4) while pressing both side of the anchor and disconnect it.



(1) fuel tank
(2) stopper cable

(3) frame hook
(4) harness band clip

5. Remove the fuel pump mounting nuts (5), fuel pump mounting cap nut (6), stopper cable guide (7), stopper cable (2), washer (8), collars (9), conical spring washers (10) and fuel pump plate (11) while holding the fuel tank.



(2) stopper cable
(5) fuel pump mounting nuts
(6) fuel pump mounting cap nut
(7) stopper cable guide
(8) washer
(9) collars
(10) conical spring washers
(11) fuel pump plate