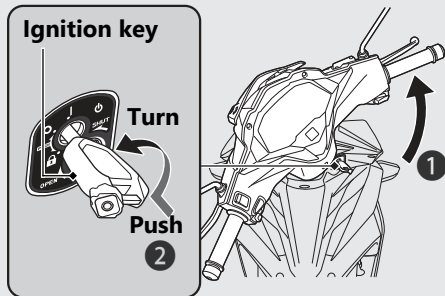



## Steering Lock

Lock the steering when parking to help prevent theft.


A U-shaped wheel lock or similar device is also recommended.



## Locking

- 1 Turn the handlebar all the way to the left or right.
- 2 Push the key down, and turn the ignition switch to the  (Lock) position.
  - ▶ Jiggle the handlebar if the lock is difficult to engage.
- 3 Remove the key.

## Unlocking

Insert the key, push it in, and turn the ignition switch to the  (Off) position.