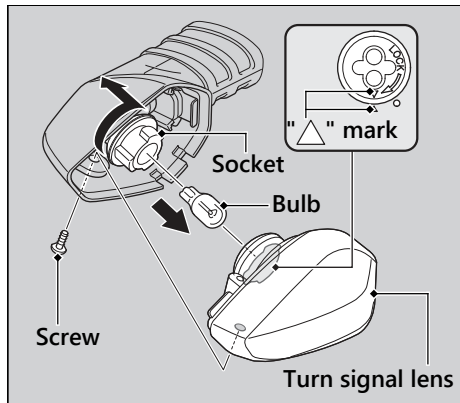


4. Install a new bulb and parts in the reverse order of removal.
 - Install the socket by turning it clockwise. Make sure that the "△" marks on the socket and the brakelight/taillight housing are aligned.
5. Close the seat.

Front/Rear Turn Signal Bulb



1. Remove the screw and turn signal lens.
2. Turn the socket counterclockwise and pull it out.
3. Pull the bulb out without turning it.