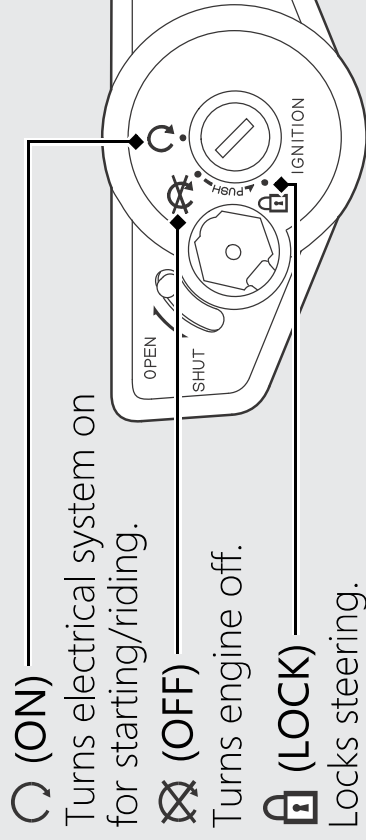


### Ignition Switch

Switches the electrical system on/off, locks the steering.

- ▶ Key can be removed when in the  (OFF) or  (LOCK) position.



 (ON)

Turns electrical system on for starting/riding.

 (OFF)

Turns engine off.

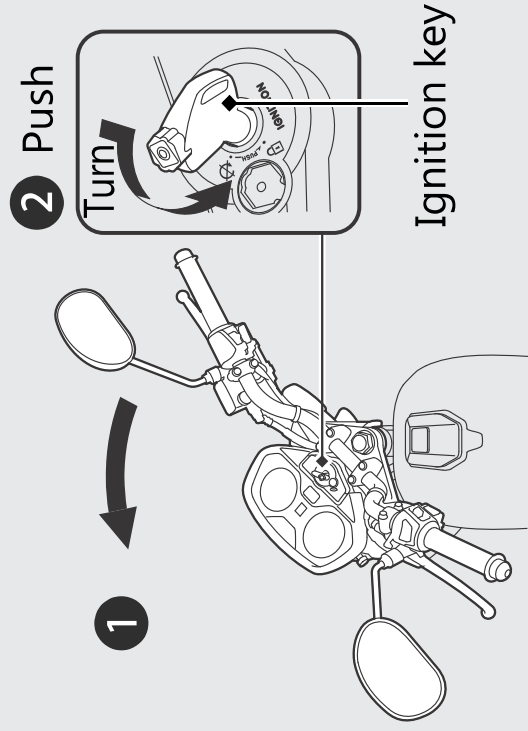
 (LOCK)

Locks steering.


### Steering Lock

Lock the steering when parking to help prevent theft.

A U-shaped wheel lock or similar device is also recommended.



### Locking

- 1 Turn the handlebar all the way to the left.
- 2 Push the key down, and turn the ignition switch to the  (LOCK) position.
  - ▶ Jiggle the handlebar if the lock is difficult to engage.
- 3 Remove the key.

### Unlocking

Insert the key and turn the ignition switch to the OFF position.