

### **Crankcase Breather**

Service more frequently when riding in rain, at full throttle, or after the motorcycle is washed or overturned. Service if the deposit level can be seen in the transparent section of the drain tube.

If the drain tube overflows, the air filter may become contaminated with engine oil causing poor engine performance. ➔ P. 70

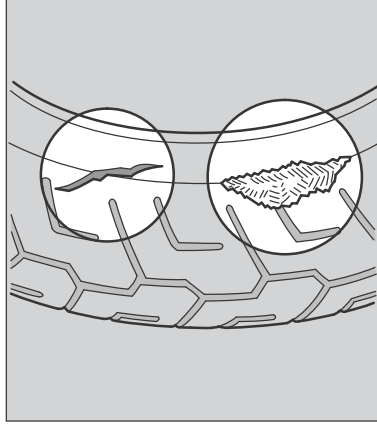
### **Tyres (Inspecting/Replacing)**

#### **Checking the Air Pressure**

Visually inspect your tyres and use an air pressure gauge to measure the air pressure at least once a month or any time you think the tyres look low. Always check air pressure when your tyres are cold.

#### **Inspecting for Damage**

Inspect the tyres for cuts, slits, or cracks that exposes fabric or cords, or nails or other foreign objects embedded in the side of the tyre or the tread. Also inspect for any unusual bumps or bulges in the side walls of the tyres.



#### **Inspecting for Abnormal Wear**

Inspect the tyres for signs of abnormal wear on the contact surface.

