

Switches (Continued)

Left handlebar

GL1800BD/D/DA

Headlight dimmer switch

- ▲ / ▼ : High beam
- ▼ / ▲ : Low beam
- ⏏ PASS : Flashes the high beam headlight.

VOL lever

Push up or down to adjust the audio system volume.

➔ P. 71

(Voice control) switch

- Press to receive, reject or end a call. ➔ P. 104
- Starts Siri® if Apple CarPlay is available. ➔ P. 103

Horn button

Turn signal switch

- The turn signal will automatically stop when you complete the turn.
- When used for a lane change, the turn signal automatically stops after 7 seconds or after riding 131 yards (120 m).
- ▶ You can manually cancel the turn signal by pressing the switch in.
- ▶ In some cases, the timing at which the turn signal stops is changed.
- ▶ Always use the recommended tires to ensure correct automatic cancellation operation.

To enable or disable the turn signal automatic cancellation: ➔ P. 28

4-way key/ENT switch

- Press the 4-way key switch in the ▲ / ▼ / ◀ / ▶ directions to select the available choices.
- Press ENT switch to set your selection. ➔ P. 24

Windscreen adjusting lever

Push up or down to adjust the windscreen height. ➔ P. 136

(Home) switch

Press to return to the Home screen. ➔ P. 24

(Back) switch

Press to return to the previous screen. ➔ P. 24

(Source/Private Mode) switch

- Press to change the audio mode. ➔ P. 71
- Press and hold to enable/disable the private mode. ➔ P. 90

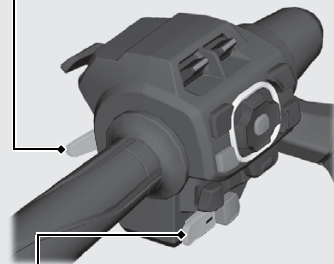
Walking Speed mode switch

Press to enter the Walking Speed mode. ➔ P. 117

Shift up switch (+)

- Pull to shift up a gear. ➔ P. 116
- Pull to move the vehicle forward during the Walking Speed mode.

➔ P. 117



Shift down switch (-)

- Press to shift down a gear. ➔ P. 116
- Press to move the vehicle backward during the Walking Speed mode.

➔ P. 117