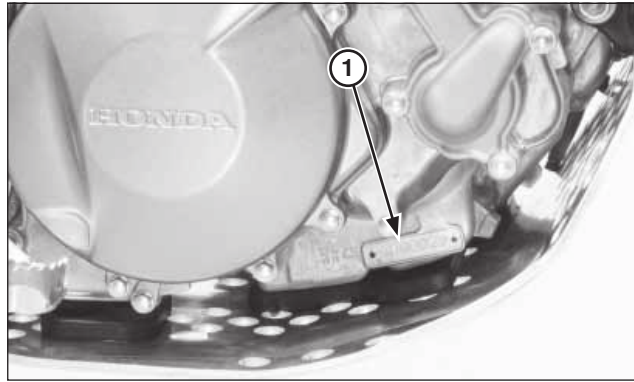


(1) FRAME NUMBER

#### Serial numbers

The Vehicle Identification Number (VIN) is stamped on the right side of the steering head.



(1) ENGINE NUMBER

The serial number of the engine is stamped on the lower right side of the crankcase.

| MODEL     | TYPE | FRAME No.           | ENGINE No.  |
|-----------|------|---------------------|-------------|
| MST 260 H | ED   | *VTDND14A?HE000001* | NN4E6001001 |