

Basic maintenance

A concentration of up to 60% will provide greater protection in cold climates.

NOTICE

The use of coolants not specified for aluminium engines or tap water can cause corrosion.

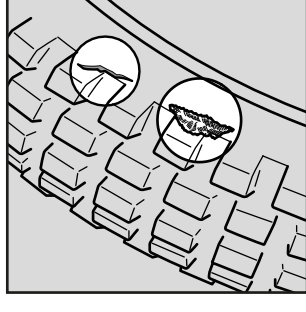
Tyres (inspection / replacement)

Checking the tyre pressure

Visually inspect the tyres and use a pressure gauge to check the air pressure before riding off-road and every time you return to the asphalt after off-road riding. If you only ride on asphalted surfaces, check the pressure at least once a month or whenever it seems like the tyres are a little flat. Always check the pressure when the tyres are cold. If you decide to adjust the tyre pressure for a specific off-road riding situation, make the changes little by little.

Inspecting damage

Check for cuts, slits or cracks that expose the cords or fabric, as well as for nails or other foreign objects embedded in the side of the tyre or in the tread. Also inspect any possible bulges or protrusions in the side walls of the tyres.



Checking for abnormal wear

Inspect the tyres, looking for signs of abnormal wear on the contact surface.

