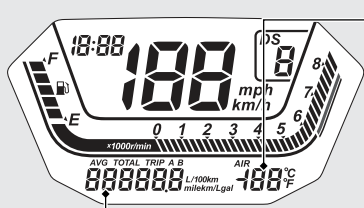


## Instruments (Continued)



### Air temperature gauge

Shows ambient temperature.

Display range: 14 to 122 °F (-10 to 50 °C)

- Below 14 °F (-10 °C): "--" is displayed
- Above 122 °F (50 °C): 122 °F (50 °C) flashes

The temperature readout may be incorrect at low speeds due to reflected heat.

### Odometer [TOTAL] & Tripmeter [TRIP A/B] & Current fuel mileage & Average fuel mileage [AVG] & Fuel consumption meter

The **[SEL]** button selects the odometer, tripmeter A, tripmeter B, current fuel mileage, average fuel mileage and fuel consumption.

▶ To reset the tripmeter: **➡ P.24**

