

Engine Oil & Filter

Install a New Engine Oil Filter:

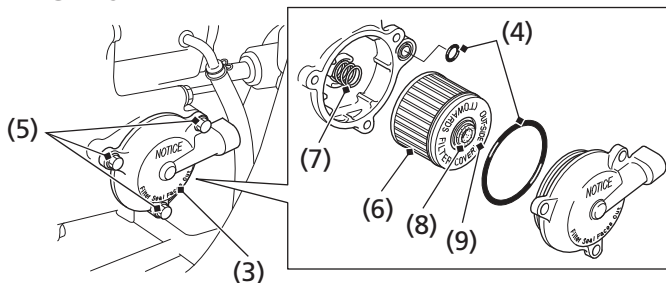
Place shop towels under the oil filter cover because oil will flow out.

1. Remove the seat (page 122) and tank cover assembly (page 124).
2. Remove the oil filter cover (3) and O-rings (4) by removing the bolts (5). Let the remaining oil drain out. Discard the oil filter (6) in an approved manner (page 210).
3. Apply engine oil to new O-rings and install them to the oil filter cover and crankcase cover.
4. Reposition the spring (7) to the crankcase cover and install a new oil filter with the rubber seal (8) facing out, away from the engine. You will see the "OUT-SIDE (TOWARDS FILTER COVER)" mark (9) on the filter body, near the seal. Use only the Honda Genuine oil filter or a filter of equivalent quality specified for your model. Using the wrong Honda filter or a non-Honda filter which is not of equivalent quality may cause engine damage.

NOTICE

Improper installation of the oil filter can cause serious engine damage.

RIGHT SIDE



- (3) oil filter cover
- (4) O-rings
- (5) bolts
- (6) oil filter

- (7) spring
- (8) rubber seal
- (9) "OUT-SIDE" mark