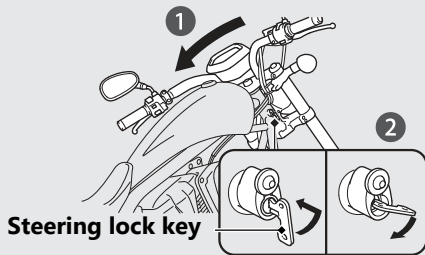


Switches *(Continued)*

Steering Lock

Lock the steering when parking to help prevent theft.

A U-shaped wheel lock or similar device is also recommended.



Steering lock key

The shape of the steering lock key may differ from the actual key.

Locking

- 1 Turn the handlebar all the way to the left.
- 2 Insert the steering lock key in the steering lock, turn the key 90 degrees counterclockwise. Push and turn the key clockwise.
 - ▶ Jiggle the handlebar if the lock is difficult to engage.
- 3 Remove the key.

Unlocking

Insert the steering lock key into the steering lock and turn it counterclockwise.