

## Inspecting the Rear Brake Pedal Freeplay (VT750C2/C2F/C2B)

### Pedal Height Adjustment

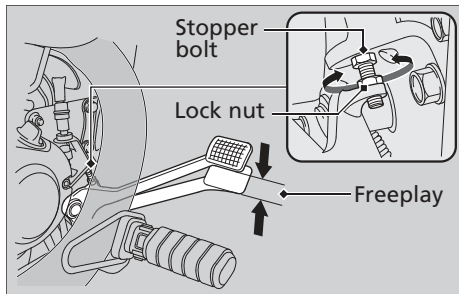
The stopper bolt is provided to allow adjustment of the pedal height.

1. Loosen the lock nut and turn the stopper bolt.
2. Tighten the lock nut.

### Inspection

1. Place your motorcycle on a firm, level surface.
2. Measure the distance of the rear brake pedal before the starts to take hold.

**Freeplay at the tip of the brake pedal:** 13/16 to 1 3/16 in (20 to 30 mm)



Make sure the brake rod, brake arm, spring and fastener are in good condition.