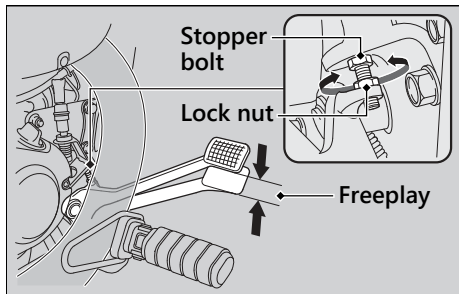


## Adjusting the Rear Brake Pedal Height

### VT750C

The stopper bolt is provided to allow adjustment of the pedal height.

1. Place your motorcycle on its side stand on a firm, level surface.
2. Loosen the lock nut and turn the stopper bolt.
3. Tighten the lock nut and check the freeplay.



## Inspecting the Rear Brake Pedal Freeplay

### VT750C

1. Place your motorcycle on its side stand on a firm, level surface.
2. Measure the distance the rear brake pedal moves before the brake takes hold.

### Freeplay at the tip of the brake pedal:

13/16 - 1 3/16 in (20 - 30 mm)

Make sure the brake rod, brake arm, spring and fastener are in good condition.