

# SUPPLEMENT TO CB750K8 ('78)

Engine No. CB750E—3000001 and  
subsequent

Frame No. CB750K—2800001 and  
subsequent

GROUP  
26

## 1. AIR CLEANER

### Breather Element Cleaning

1. Remove the left side cover, chain protector and diode rectifier. Remove the 6mm breather element case mounting bolt, disconnect the breather tubes and remove the breather element case.
2. Loosen the four screws and remove the case cover.
3. Remove the retaining plate and breather element from the case.

#### CAUTION

Be careful not to damage the retaining plate.

4. Wash the breather element in clean solvent and dry the element thoroughly.

#### WARNING

Gasoline or low flash point solvents are explosive and highly flammable and must not be used to clean the breather element. Fire or explosion could result.

NOTE: When installing the case cover, position it as shown in Fig. K8-3.

## 2. CARBURETOR

### Carburetor Setting Table

Setting number	PD42B
Main jet	No. 110
Slow jet	No. 35
Pilot screw opening	1-1/2
Float height	14.5 mm (0.571 in.)

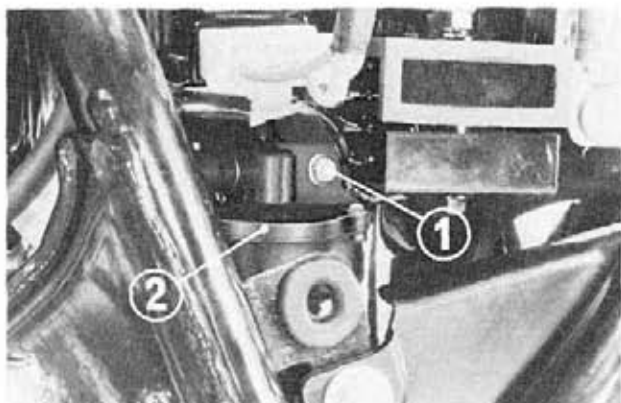


Fig. K8-1 ① Mounting bolt  
② Breather element case

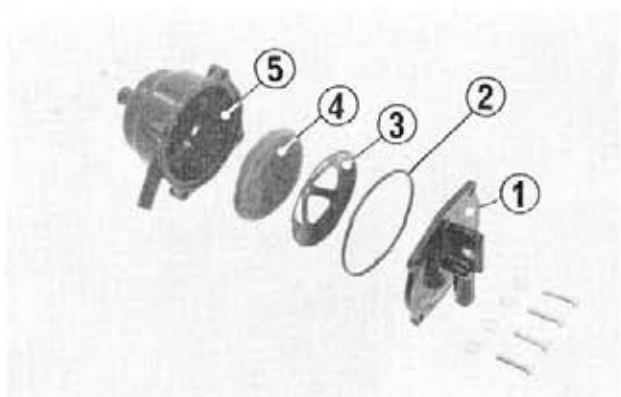


Fig. K8-2 ① Case cover  
② O-ring  
③ Retaining plate  
④ Breather element  
⑤ Element case

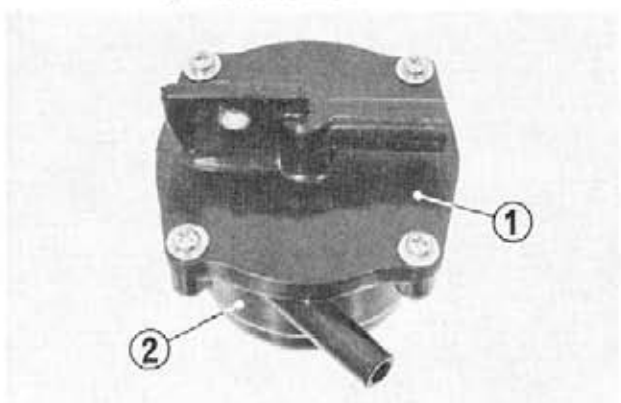


Fig. K8-3 ① Case cover  
② Element case