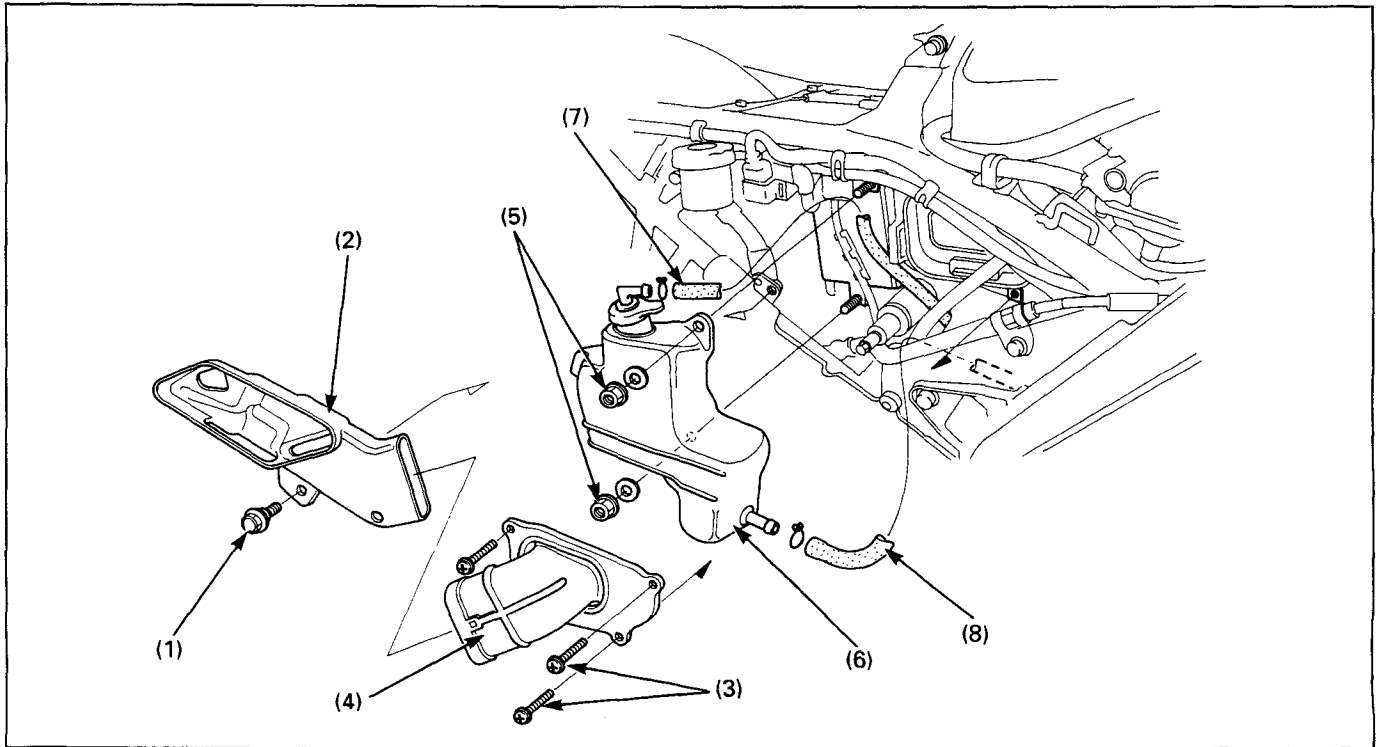


Reserve Tank Removal/Installation



Requisite Service

- Coolant draining/refilling
- Side cover removal/installation (page 2-3)

Procedure		Q'ty	Remarks
Removal Order			Installation is in the reverse order of removal.
(1)	Intake duct bolt	1	
(2)	Intake duct	1	
(3)	Element cover screw	3	
(4)	Element cover	1	
(5)	Reserve tank nut	2	
(6)	Reserve tank	1	
(7)	Reserve tank breather tube	1	
(8)	Siphon tube	1	